

**Zebrafish ankrd13c Antibody (C-term)**  
**Purified Rabbit Polyclonal Antibody (Pab)**  
**Catalog # Azb18714c****Specification**

---

**Zebrafish ankrd13c Antibody (C-term) - Product Information**

Application	WB,E
Primary Accession	<a href="#">Q7ZUV0</a>
Reactivity	Zebrafish
Host	Rabbit
Clonality	Polyclonal
Isotype	Rabbit IgG
Antigen Region	475-508

**Zebrafish ankrd13c Antibody (C-term) - Additional Information****Gene ID** 325167**Other Names**

Ankyrin repeat domain-containing protein 13C, ankrd13c

**Target/Specificity**

This Zebrafish ankrd13c antibody is generated from a rabbit immunized with a KLH conjugated synthetic peptide between 475-508 amino acids of zebrafish ankrd13c.

**Dilution**

WB~~1:1000

E~~Use at an assay dependent concentration.

**Format**

Purified polyclonal antibody supplied in PBS with 0.09% (W/V) sodium azide. This antibody is purified through a protein A column, followed by peptide affinity purification.

**Storage**

Maintain refrigerated at 2-8°C for up to 2 weeks. For long term storage store at -20°C in small aliquots to prevent freeze-thaw cycles.

**Precautions**

Zebrafish ankrd13c Antibody (C-term) is for research use only and not for use in diagnostic or therapeutic procedures.

**Zebrafish ankrd13c Antibody (C-term) - Protein Information****Name** ankrd13c

**Function** Acts as a molecular chaperone for G protein-coupled receptors, regulating their biogenesis and exit from the ER.

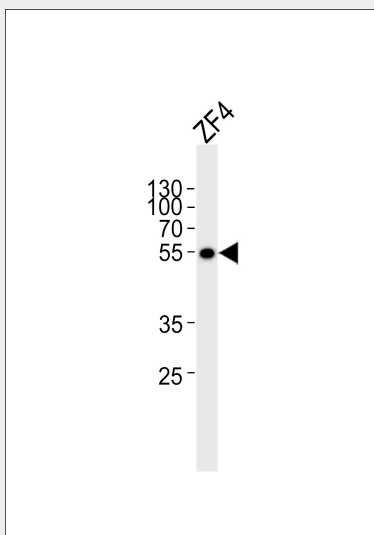
**Cellular Location**

Endoplasmic reticulum membrane. Note=Associated with the cytosolic side.

**Zebrafish ankrd13c Antibody (C-term) - Protocols**

Provided below are standard protocols that you may find useful for product applications.

- [Western Blot](#)
- [Blocking Peptides](#)
- [Dot Blot](#)
- [Immunohistochemistry](#)
- [Immunofluorescence](#)
- [Immunoprecipitation](#)
- [Flow Cytometry](#)
- [Cell Culture](#)

**Zebrafish ankrd13c Antibody (C-term) - Images**

Western blot analysis of lysate from ZF4 cell line, using Zebrafish ankrd13c Antibody (C-term) (Cat. #Azb18714c). Azb18714c was diluted at 1:1000. A goat anti-rabbit IgG H&L (HRP) at 1:5000 dilution was used as the secondary antibody. Lysate at 35ug.

**Zebrafish ankrd13c Antibody (C-term) - Background**

Acts as a molecular chaperone for G protein-coupled receptors, regulating their biogenesis and exit from the ER (By similarity).